

# **ALBANY POLICE DEPARTMENT CRIME ANALYSIS**

**“Combating Crime and Protecting Lives”**

***Prepared By the Crime Analysis Unit of The Albany Police Department***

**\*\*These numbers may be updated from month to month as records updates occur\*\***

# 2014

**Month of January**

**Distribution: CITY MANAGER, ASST. CITY MANAGERS**

CHIEF OF POLICE  
DEPUTY CHIEF - INVESTIGATIVE  
DEPUTY CHIEF – UNIFORM  
DEPUTY CHIEF – SUPPORT SERVICES  
MAJOR - INTERNAL AFFAIRS  
INVESTIGATIONS CAPTAINS  
UNIFORM CAPTAINS  
ACCREDITATION MANAGER

SPECIAL OPERATIONS CAPT.  
FAMILY PROTECTION  
RECORDS SUPERVISOR  
PLANNING & RESEARCH  
TRAINING SUPERVISOR  
CHIEF'S ADMIN ASSISTANT  
SUPPORT SERVICES LT

**\*Information Included in this Report Reflects  
Compliance with UCR Reporting Standards**

***The information contained in this report is primarily raw data until calendar year reporting.***

Please contact David Sparks, APD Crime Analyst for questions regarding this report @ 431-2878.

# Monthly Part I Crimes

## Albany Police Department

### Part I Crimes Committed During the Month of January 2014 with Comparisons of January 2012 & 2011

Actual Offenses	2014 2013 Month to Month		+/- Change		2014 2012 Month to Month		+/- Change	
Offenses Committed	January 2014	January 2013	#	%	January 2014	January 2012	#	%
Homicide	1	0	1	*NC	1	0	1	*NC
Rape	1	1	0	0.00	1	4	-3	-75.00
Robbery	16	16	0	0.00	16	17	-1	-5.88
Aggravated Assault	49	42	7	16.67	49	40	9	22.50
<b>Violent Crime Total</b>	<b>67</b>	<b>59</b>	<b>8</b>	<b>13.56</b>	<b>67</b>	<b>61</b>	<b>6</b>	<b>9.84</b>
Arson	0	2	-2	-100.00	0	3	-3	-100.00
Burglary	114	103	11	10.68	114	123	-9	-7.32
Larceny	229	314	-85	-27.07	229	269	-40	-14.87
Auto Theft	20	12	8	66.67	20	24	-4	-16.67
<b>Property Crime Total</b>	<b>363</b>	<b>431</b>	<b>-68</b>	<b>-15.78</b>	<b>363</b>	<b>419</b>	<b>-56</b>	<b>-13.37</b>
<b>Crime Trend Total</b>	<b>430</b>	<b>490</b>	<b>-60</b>	<b>-12.24</b>	<b>430</b>	<b>480</b>	<b>-50</b>	<b>-10.42</b>

### Part I Case Clearances During the Month of January 2014 with Comparisons of January 2013 & 2012

	2014	2013	2012	2014	2013	2012
Offenses Cleared	January # Cleared	January # Cleared	January # Cleared	January % Cleared	January % Cleared	January % Cleared
Homicide	2	0	0	200.00%	*NC	*NC
Rape	1	2	2	100.00%	200.00%	50.00%
Robbery	2	7	4	12.50%	43.75%	23.53%
Aggravated Assault	20	20	22	40.82%	47.62%	55.00%
<b>Violent Crime Cleared</b>	<b>25</b>	<b>29</b>	<b>28</b>	<b>37.31%</b>	<b>49.15%</b>	<b>45.90%</b>
Arson	0	1	0	*NC	50.00%	0.00%
Burglary	12	8	12	10.53%	7.77%	9.76%
Larceny	46	52	53	20.09%	16.56%	19.70%
Auto Theft	6	2	1	30.00%	16.67%	4.17%
<b>Property Crime Cleared</b>	<b>64</b>	<b>63</b>	<b>66</b>	<b>17.63%</b>	<b>14.62%</b>	<b>15.75%</b>
<b>Clearance Total</b>	<b>89</b>	<b>92</b>	<b>94</b>	<b>20.70%</b>	<b>18.78%</b>	<b>19.58%</b>

\* The Crime Trend and Clearance Totals do not include percentages for numbers not divisible by 0.

# Year to Date Part I Crimes

## Albany Police Department

Part I Crimes Committed Year-to-date as of January 2014 with Comparisons of January 2013 & 2012									
Actual Offenses	2014      2013		+/- Change			2014      2012		+/- Change	
	Year to Date					Year to Date			
Offenses Committed	January 2014	January 2013	#	%		January 2014	January 2012	#	%
Homicide	1	0	1	*NC		1	0	1	*NC
Rape	1	1	0	0.00		1	4	-3	-75.00
Robbery	16	16	0	0.00		16	17	-1	-5.88
Aggravated Assault	49	42	7	16.67		49	40	9	22.50
Violent Crime Total	67	59	8	13.56		67	61	6	9.84
Arson	0	2	-2	-100.00	0	3	-3	-100.00	
Burglary	114	103	11	10.68	114	123	-9	-7.32	
Larceny	229	314	-85	-27.07	229	269	-40	-14.87	
Auto Theft	20	12	8	66.67	20	24	-4	-16.67	
Property Crime Total	363	431	-68	-15.78	363	419	-56	-13.37	
Crime Trend Total	430	490	-60	-12.24	430	480	-50	-10.42	

Part I Case Clearances Year-to-date as of January 2014 with Comparisons of January 2013 & 2012								
Offenses Cleared	2014	2013	2012		2014	2013	2012	
	January # Cleared	January # Cleared	January # Cleared		January % Cleared	January % Cleared	January % Cleared	
Homicide	2	0	0		200.00%	*NC	*NC	
Rape	1	2	2		100.00%	200.00%	50.00%	
Robbery	2	7	4		12.50%	43.75%	23.53%	
Aggravated Assault	20	20	22		40.82%	47.62%	55.00%	
<b>Violent Crime Cleared</b>	<b>25</b>	<b>29</b>	<b>28</b>		<b>37.31%</b>	<b>49.15%</b>	<b>45.90%</b>	
Arson	0	1	0		*NC	50.00%	0.00%	
Burglary	12	8	12		10.53%	7.77%	9.76%	
Larceny	46	52	53		20.09%	16.56%	19.70%	
Auto Theft	6	2	1		30.00%	16.67%	4.17%	
<b>Property Crime Cleared</b>	<b>64</b>	<b>63</b>	<b>66</b>		<b>17.63%</b>	<b>14.62%</b>	<b>15.75%</b>	
<b>Clearance Total</b>	<b>89</b>	<b>92</b>	<b>94</b>		<b>20.70%</b>	<b>18.78%</b>	<b>19.58%</b>	

\* The Crime Trend and Clearance Totals do not include percentages for numbers not divisible by 0.

# Monthly Part II and Other Crimes

## Albany Police Department

Part II Crime Comparison of January 2014 Data with Previous Year/Month									
Part II Crimes	January 2014	January 2013	+/- #	Change %		January 2014	December 2013	+/- #	Change %
Disorderly Conduct	40	62	-22	-35.48		40	67	-27	-40.30
Domestic Violence	93	178	-85	-47.75		93	68	25	36.76
Disorderly w/intoxicated	0	0	0	*NC		0	0	0	*NC
D.U.I.	12	7	5	71.43		12	11	1	9.09
Child Molestation	9	3	6	200.00		9	2	7	350.00
Cruelty to Child	5	3	2	66.67		5	4	1	25.00
Child Protec: Curfew	0	0	0	*NC		0	0	0	*NC
Child Protec:Truancy	0	0	0	*NC		0	0	0	*NC
Interfere w/Custody	0	1	-1	-100.00		0	4	-4	-100.00
Child Abandonment	0	0	0	*NC		0	0	0	*NC
Enticing a Child	0	0	0	*NC		0	1	-1	-100.00
Forgery	9	13	-4	-30.77		9	11	-2	-18.18
Noise Ordinance Viol.	0	0	0	*NC		0	1	-1	-100.00
Harassing Phone Calls	6	8	-2	-25.00		6	6	0	0.00
Loitering	3	3	0	0.00		3	5	-2	-40.00
Missing Persons	9	22	-13	-59.09		9	24	-15	-62.50
Runaway	2	1	1	100.00		2	0	2	*NC
Suicide	0	0	0	*NC		0	0	0	*NC
Underage Poss./Consum.	0	4	-4	-100.00		0	1	-1	-100.00
Criminal Damage	21	24	-3	-12.50		21	17	4	23.53
Theft: Gas Drive Off	1	1	0	0.00		1	0	1	*NC
Simple Assault	8	10	-2	-20.00		8	5	3	60.00
Simple Battery	88	88	0	0.00		88	94	-6	-6.38
Battery	18	33	-15	-45.45		18	24	-6	-25.00
Obstruct/Hinder Police	21	17	4	23.53		21	24	-3	-12.50
Sexual Battery	1	0	1	*NC		1	1	0	0.00
Open Container	8	10	-2	-20.00		8	4	4	100.00
Sodomy	0	1	-1	-100.00		0	1	-1	-100.00
Statutory Rape	1	1	0	0.00		1	0	1	*NC
Saggy Pants	7	7	0	0.00		7	6	1	16.67
All Cases Not Listed	564	576	-12	-2.08		564	607	-43	-7.08
Total Part II Crime	926	1073	-147	-13.70		926	988	-62	-6.28

\*\* The Crime Trend and Clearance Totals do not include percentages for numbers not able to be divided by 0.

# Year to Date Part II and Other Crimes

## Albany Police Department

Part II Crime Comparison of January 2014 with Previous Januarys of 2013 & 2012									
Part II Crimes	January 2014	January 2013	+/- #	Change %		January 2014	January 2012	+/- #	Change %
Disorderly Conduct	40	62	-22	-35.48		40	61	-21	-34.43
Domestic Violence	93	178	-85	-47.75		93	158	-65	-41.14
Disorderly wh/intoxicated	0	0	0	*NC		0	0	0	*NC
D.U.I.	12	7	5	71.43		12	10	2	20.00
Child Molestation	9	3	6	200.00		9	7	2	28.57
Child Cruelty	5	3	2	66.67		5	8	-3	-37.50
Curfew	0	0	0	*NC		0	0	0	*NC
Truancy	0	0	0	*NC		0	1	-1	-100.00
Interfere w/Custody	0	1	-1	-100.00		0	1	-1	-100.00
Child Abandonment	0	0	0	*NC		0	0	0	*NC
Enticing a Child	0	0	0	*NC		0	0	0	*NC
Forgery	9	13	-4	-30.77		9	15	-6	-40.00
Noise Ordinance Viol.	0	0	0	*NC		0	1	-1	-100.00
Harassing Phone Calls	6	8	-2	-25.00		6	14	-8	-57.14
Loitering	3	3	0	0.00		3	3	0	0.00
Missing Persons	9	22	-13	-59.09		9	33	-24	-72.73
Runaway	2	1	1	100.00		2	0	2	*NC
Suicide	0	0	0	*NC		0	1	-1	-100.00
Underage Poss./Consum.	0	4	-4	-100.00		0	1	-1	-100.00
Criminal Damage	21	24	-3	-12.50		21	21	0	0.00
Theft: Gas Drive Off	1	1	0	0.00		1	3	-2	-66.67
Simple Assault	8	10	-2	-20.00		8	3	5	166.67
Simple Battery	88	88	0	0.00		88	75	13	17.33
Battery	18	33	-15	-45.45		18	31	-13	-41.94
Obstruction of Officer	21	17	4	23.53		21	16	5	31.25
Sexual Battery	1	0	1	*NC		1	1	0	0.00
Open Container	8	10	-2	-20.00		8	7	1	14.29
Sodomy	0	1	-1	-100.00		0	2	-2	-100.00
Statutory Rape	1	1	0	0.00		1	0	1	*NC
Saggy Pants	7	7	0	0.00		7	38	-31	-81.58
All Other Cases	564	576	-12	-2.08		564	512	52	10.16
Total Part II Crime	926	1073	-147	-13.70		926	1023	-97	-9.48

\*\* The Crime Trend and Clearance Totals do not include percentages for numbers not able to be divided by 0.

# Monthly Part I Crimes by District

## Albany Police Department

### January 2014

West Actual Offenses			
Offenses Committed	January 2014	December 2013	Year to Date 2014
Homicide	0	0	0
Rape	0	1	0
Robbery	4	6	4
Aggravated Assault	13	13	13
<b>Violent Crime Total</b>	<b>17</b>	<b>20</b>	<b>17</b>
Arson	0	1	0
Burglary	30	62	30
Larceny	88	102	88
Auto Theft	4	1	4
<b>Property Crime Tot.</b>	<b>122</b>	<b>166</b>	<b>122</b>
<b>Crime Trend Total</b>	<b>139</b>	<b>186</b>	<b>139</b>

Central Actual Offenses			
Offenses Committed	January 2013	December 2013	Year to Date 2014
Homicide	0	0	0
Rape	0	3	0
Robbery	7	9	7
Aggravated Assault	25	23	25
<b>Violent Crime Total</b>	<b>32</b>	<b>35</b>	<b>32</b>
Arson	0	0	0
Burglary	43	41	43
Larceny	58	76	58
Auto Theft	7	2	7
<b>Property Crime Tot.</b>	<b>108</b>	<b>119</b>	<b>108</b>
<b>Crime Trend Total</b>	<b>140</b>	<b>154</b>	<b>140</b>

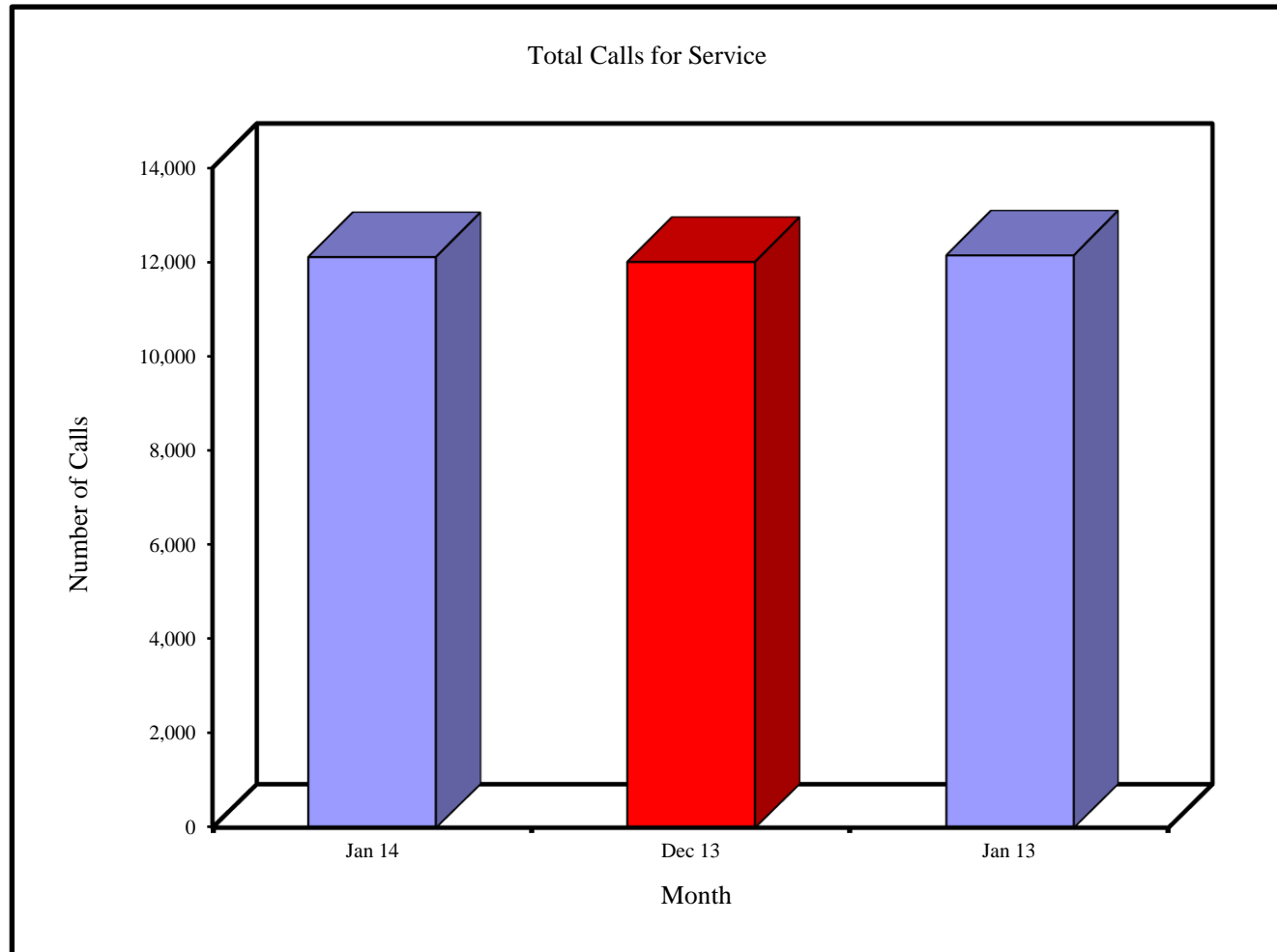
East Actual Offenses			
Offenses Committed	January 2013	December 2013	Year to Date 2014
Homicide	1	1	1
Rape	1	0	1
Robbery	5	6	5
Aggravated Assault	11	18	11
<b>Violent Crime Total</b>	<b>18</b>	<b>25</b>	<b>18</b>
Arson	0	1	0
Burglary	41	41	41
Larceny	83	65	83
Auto Theft	9	7	9
<b>Property Crime Tot.</b>	<b>133</b>	<b>114</b>	<b>133</b>
<b>Crime Trend Total</b>	<b>151</b>	<b>139</b>	<b>151</b>

# Monthly Total Calls for Service

## Albany Police Department

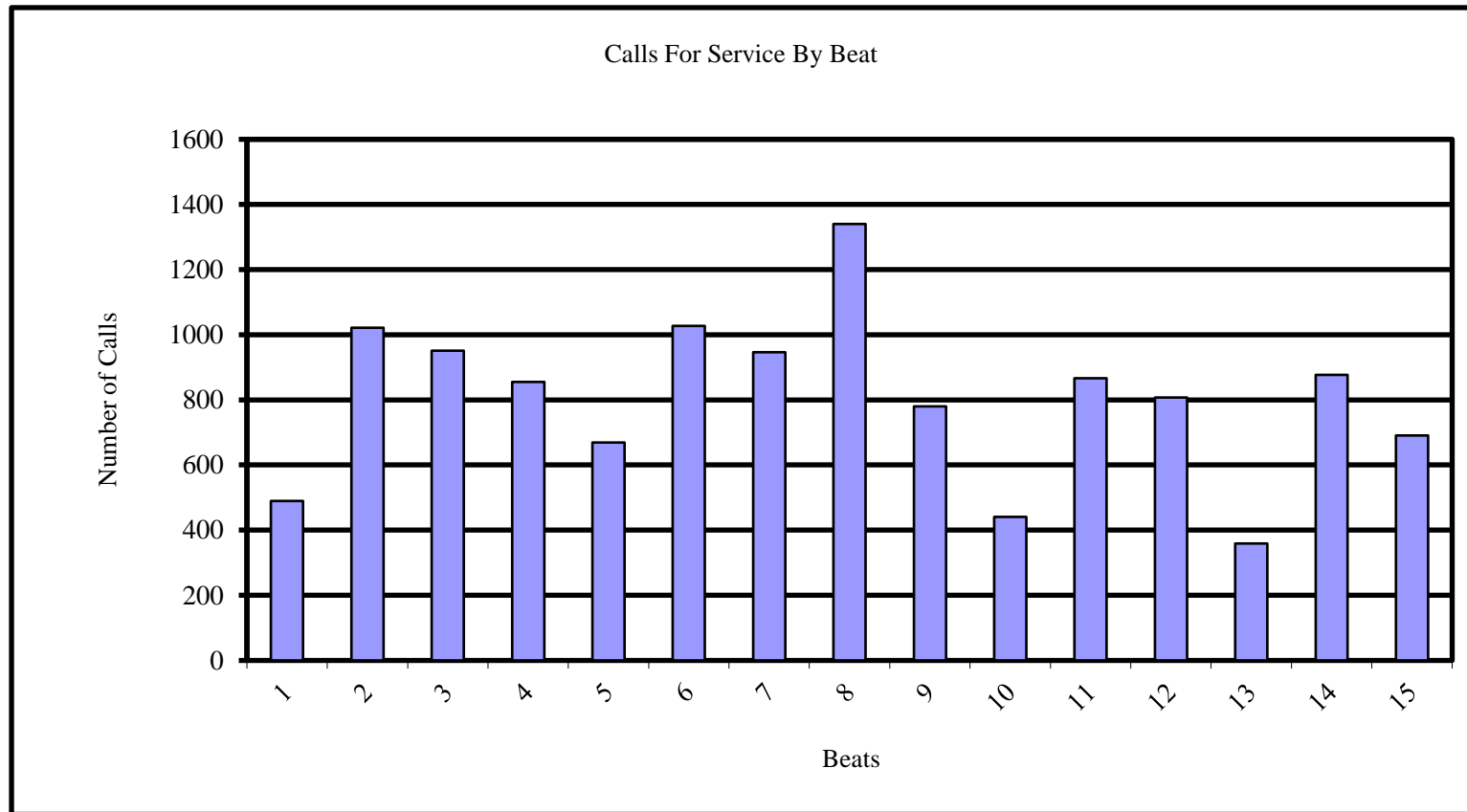
### Total Calls For Service

Jan 14	Dec 13	Jan 13
12,120	12,017	12,155



# Monthly Calls for Service by Beats

## Albany Police Department



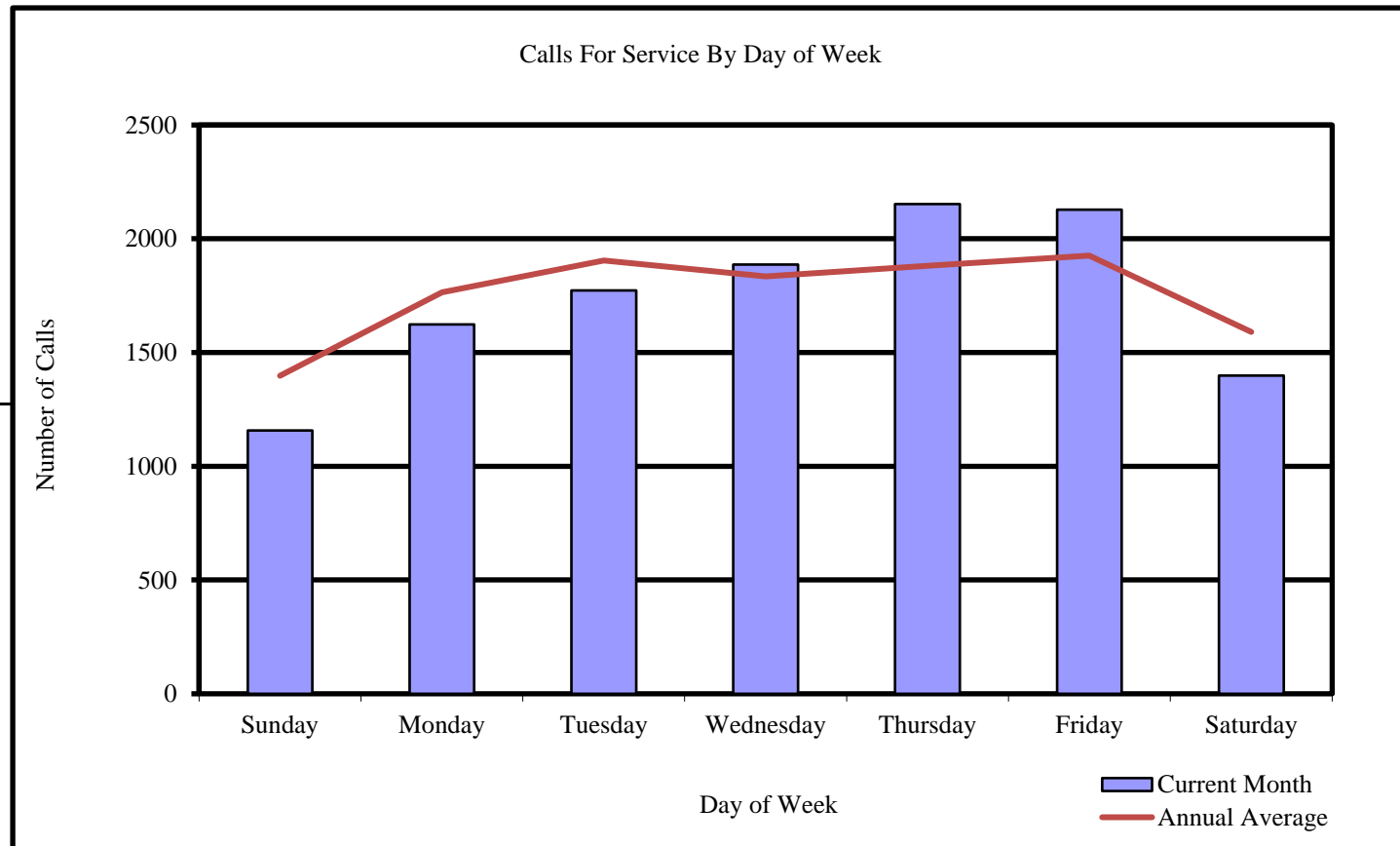
Beats	1	2	3	4	5	6	7	8	9	10	11	12	13	14	15
Calls in January 2014	490	1021	951	855	669	1027	946	1340	780	441	866	807	359	877	691



# Monthly Calls for Service by Day of Week

## Albany Police Department

<u>Calls For Service</u>	
Day	January 2014
Sunday	1158
Monday	1624
Tuesday	1773
Wednesday	1887
Thursday	2152
Friday	2128
Saturday	1398
	<hr/> 12120

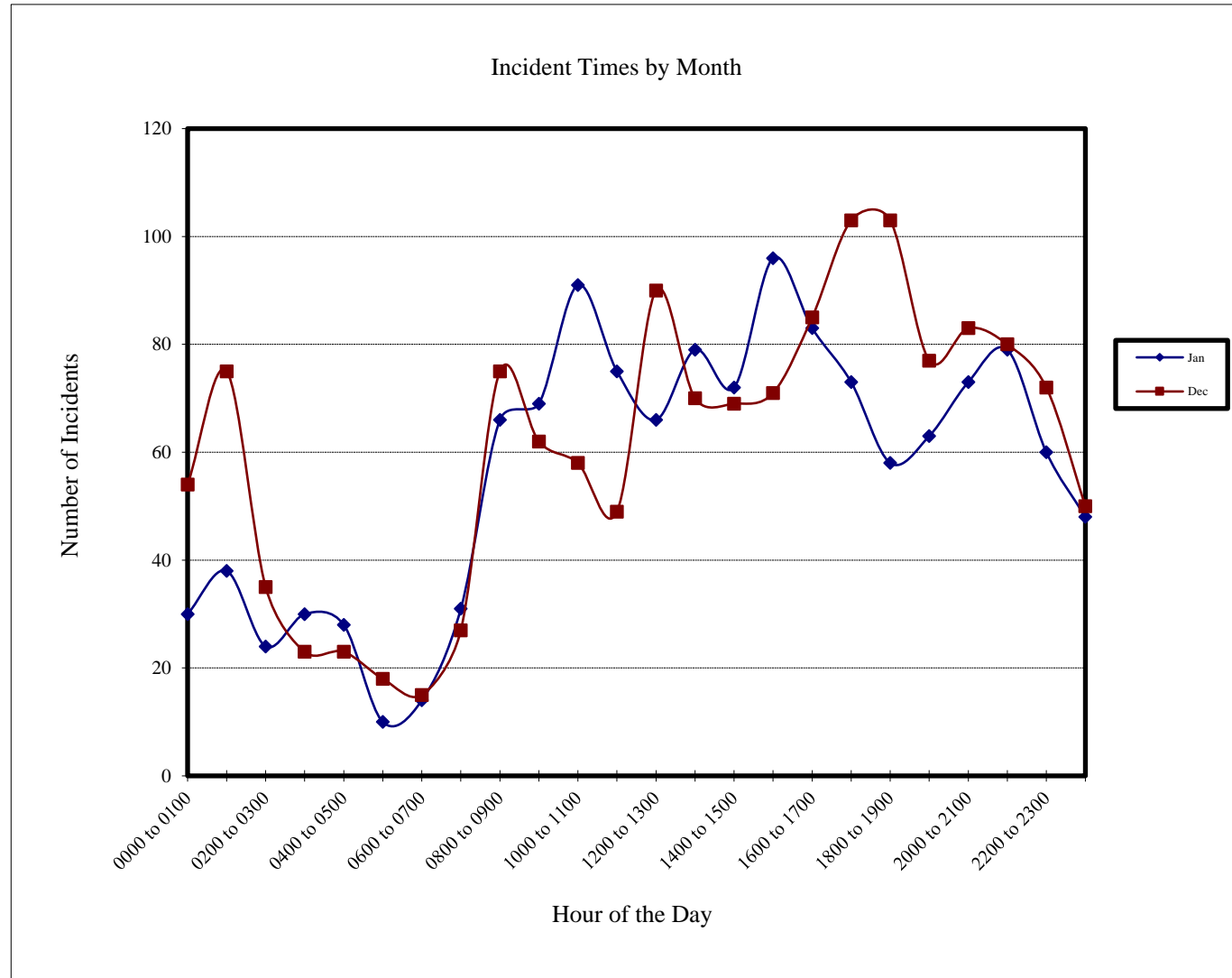


# Incidents by Hour

## Albany Police Department

### Incident Times by Month

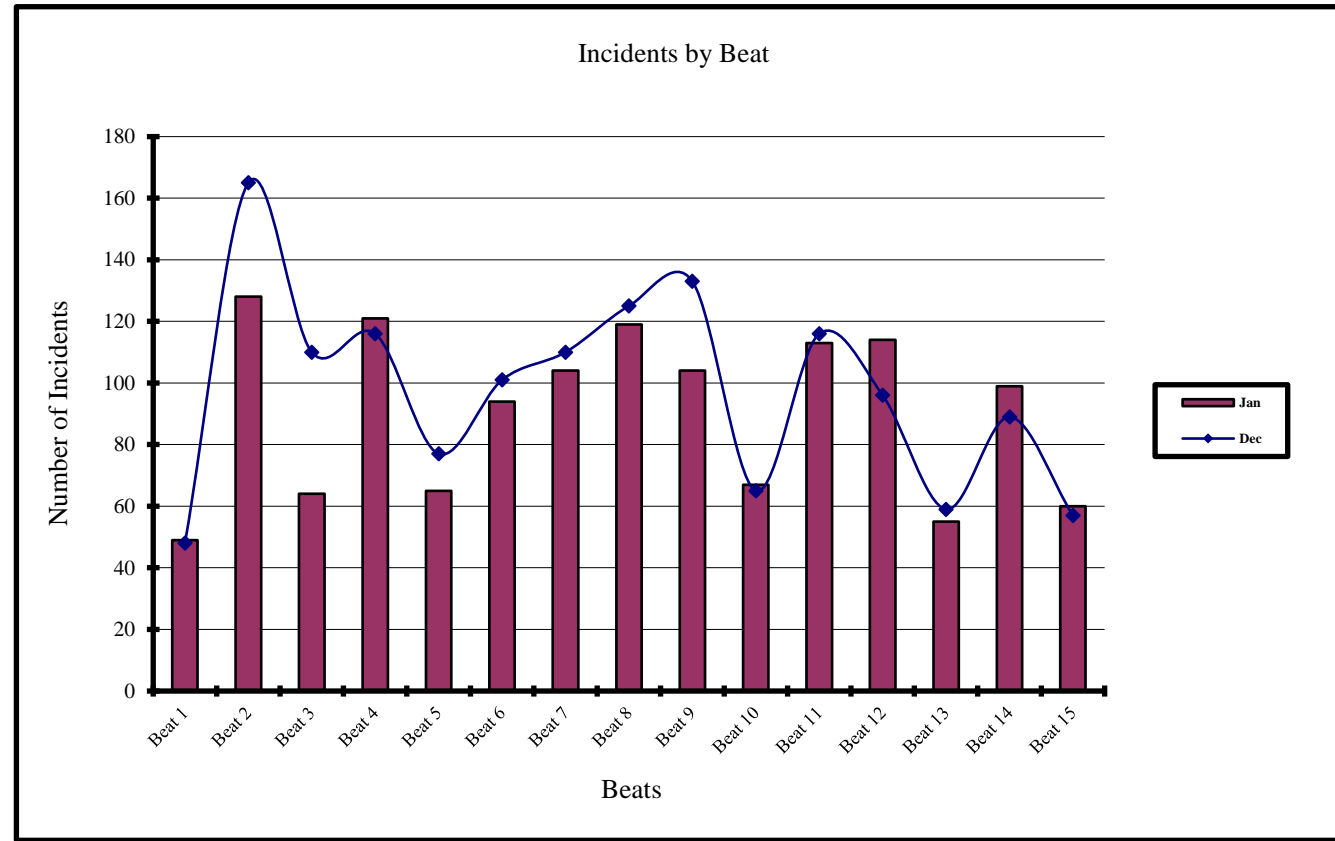
Hour of Day	Jan 2014	Dec 2013
0000 to 0100	30	54
0100 to 0200	38	75
0200 to 0300	24	35
0300 to 0400	30	23
0400 to 0500	28	23
0500 to 0600	10	18
0600 to 0700	14	15
0700 to 0800	31	27
0800 to 0900	66	75
0900 to 1000	69	62
1000 to 1100	91	58
1100 to 1200	75	49
1200 to 1300	66	90
1300 to 1400	79	70
1400 to 1500	72	69
1500 to 1600	96	71
1600 to 1700	83	85
1700 to 1800	73	103
1800 to 1900	58	103
1900 to 2000	63	77
2000 to 2100	73	83
2100 to 2200	79	80
2200 to 2300	60	72
2300 to 2400	48	50



# Current and Previous Months Comparison of Incidents by Beat

## Albany Police Department

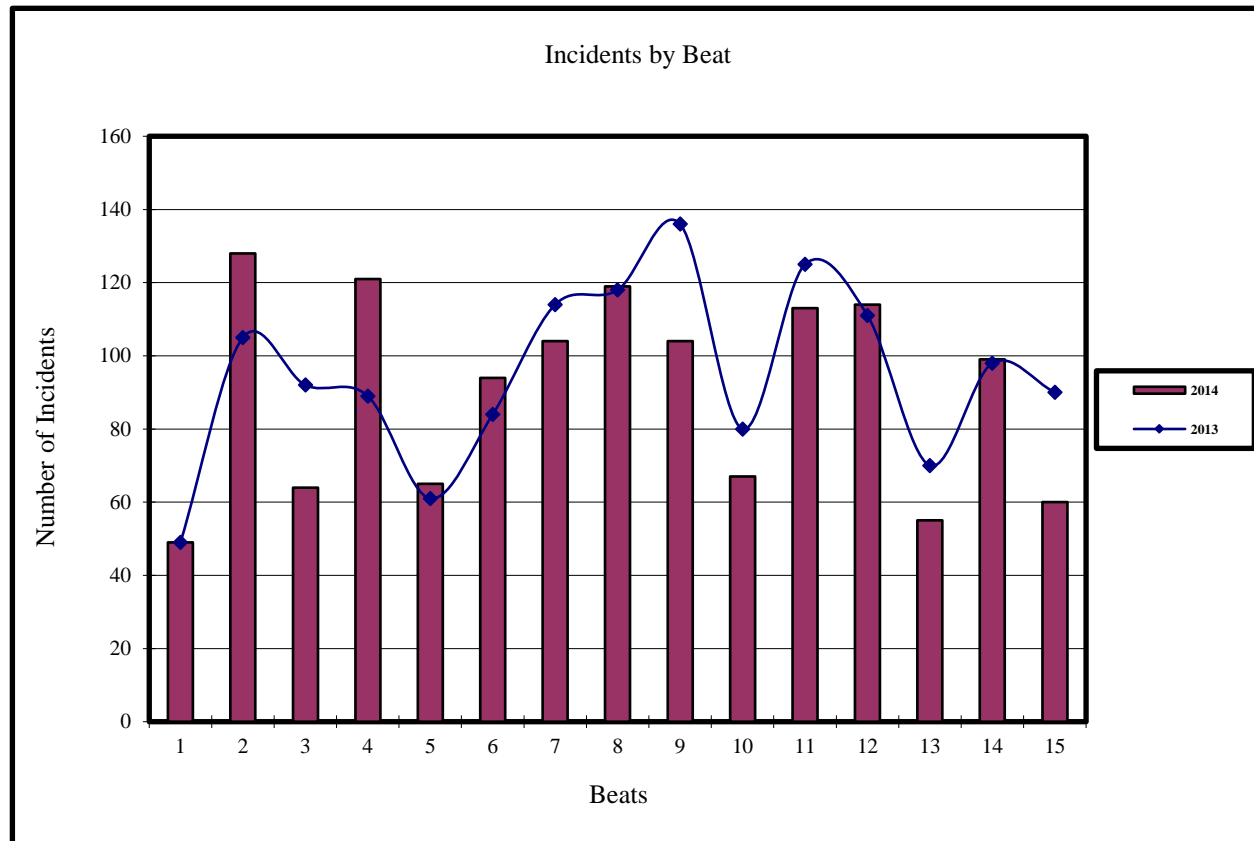
Incidents		
Beat	Jan 2014	Dec 2013
Beat 1	49	48
Beat 2	128	165
Beat 3	64	110
Beat 4	121	116
Beat 5	65	77
Beat 6	94	101
Beat 7	104	110
Beat 8	119	125
Beat 9	104	133
Beat 10	67	65
Beat 11	113	116
Beat 12	114	96
Beat 13	55	59
Beat 14	99	89
Beat 15	60	57



# Current and Previous Year Comparison of Incidents by Beat

## Albany Police Department

Incidents		
Beat	Jan 2014	Jan 2013
Beat 1	49	49
Beat 2	128	105
Beat 3	64	92
Beat 4	121	89
Beat 5	65	61
Beat 6	94	84
Beat 7	104	114
Beat 8	119	118
Beat 9	104	136
Beat 10	67	80
Beat 11	113	125
Beat 12	114	111
Beat 13	55	70
Beat 14	99	98
Beat 15	60	90



# Current and Previous Month Comparison of Monthly Incidents by Day of Week Albany Police Department

Incidents		
Day	Jan 2014	Dec 2013
Sunday	165	233
Monday	154	248
Tuesday	181	233
Wednesday	220	155
Thursday	221	179
Friday	234	210
Saturday	181	209

